

## Guidance Specification

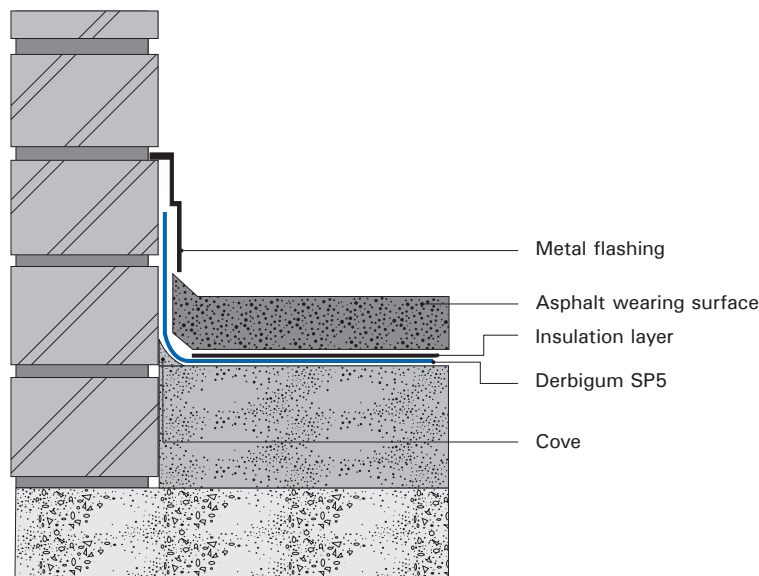
### Parking Decks (Premix Asphalt)

#### Substrate

The substrate shall be to falls and cross falls of 1:80 to outlets. If no falls and cross falls exist (not recommended) a dual layer system must be used. The substrate shall be surface dry, clean and smooth; free of voids, protrusions and contaminants. The area is then to be primed using a bituminous primer. Internal corners shall be filleted and external corners rounded.

#### Specification

One layer Derbigum SP5 waterproofing membrane, laid staggered, with 75mm side laps and 100mm end laps, sealed to primed surfaces by "torch-fusion", followed by a layer of Bidim or Interdek geotextile with 50mm laps, spot-bonded to waterproofing with bitumen flashing compound as isolation/protection layer to receive premix asphalt (elsewhere specified). Waterproofing to be installed by an Approved Derbigum Contractor under a ten year guarantee.



#### Outlets

The waterproofing is to be fully dressed into the drainage outlets so as to ensure a watertight seal. Outlets are to be positioned so that they are easily accessible both for the Waterproofing Contractor at the time of installation and maintenance purposes at some future date. Ensure that the level of the flange is kept below the screed level to prevent ponding around the outlet.

#### Flood Test

The integrity of the waterproofing should be established by means of a flood-test of 48hrs – 72hrs duration, prior to handing over to the contractor. A certificate is to be obtained from the Professional Team recording the date and time-period of the test and that the waterproof treatment was handed over in a clean, proper and watertight condition.

Derbigum Manufacturing (Pty) Ltd. accepts no responsibility for accuracy of any typical / guidance details or drawings or specifications contained herein. These specifications and details are not to scale and are intended only to be used as a guideline. For more detailed specifications please contact your nearest branch.